

PORCHLIGHT SOLAR PROJECT

June 2024

Porchlight Solar Project, LLC is proposing a 148 MW solar energy facility and 50 MW battery energy storage system in Portage County, bringing many positive impacts to the local economy and community. A solar project provides a healthy and productive economic development opportunity for local landowners to harvest a stable cash crop - the sun.

We are excited to be working in partnership with the Portage County community on an opportunity to host an economically productive and environmentally compatible, renewable energy generation facility.



Footprint:
1100 acres



Power Capacity:
148 MW solar
50 MW BESS



Lifespan:
30+ years



**Equivalent Homes
Powered:**
~40,000 homes



**Financial
Contribution:**
\$740,000 / yr

Positive Economic Impact

- Will pay \$740,000 annually to the local community in the form of Wisconsin Utility Aid Payments
- Boosts local business; creates new jobs during construction
- No additional burden on local infrastructure on municipal services (i.e. sewer, water, water, emergency services, school teachers, etc.)

Working with the Environment

- Native vegetation will positively impact soil health and provide crucial habitat for pollinators
- Requires minimal water consumption during construction & operations
- Clean, renewable energy that has a beneficial impact on the environment
- Decommissioning plan to be established before construction begins

Powering the Community

- Brings Wisconsin closer to energy independence by reducing the need to purchase coal from outside the state
- Hedges and stabilizes future price of electricity through zero fuel costs
- Diversifies and decentralizes our nation's electricity grid
- Energy storage facility provides vital backup power and stabilizes the grid



Projected construction start:
early 2027

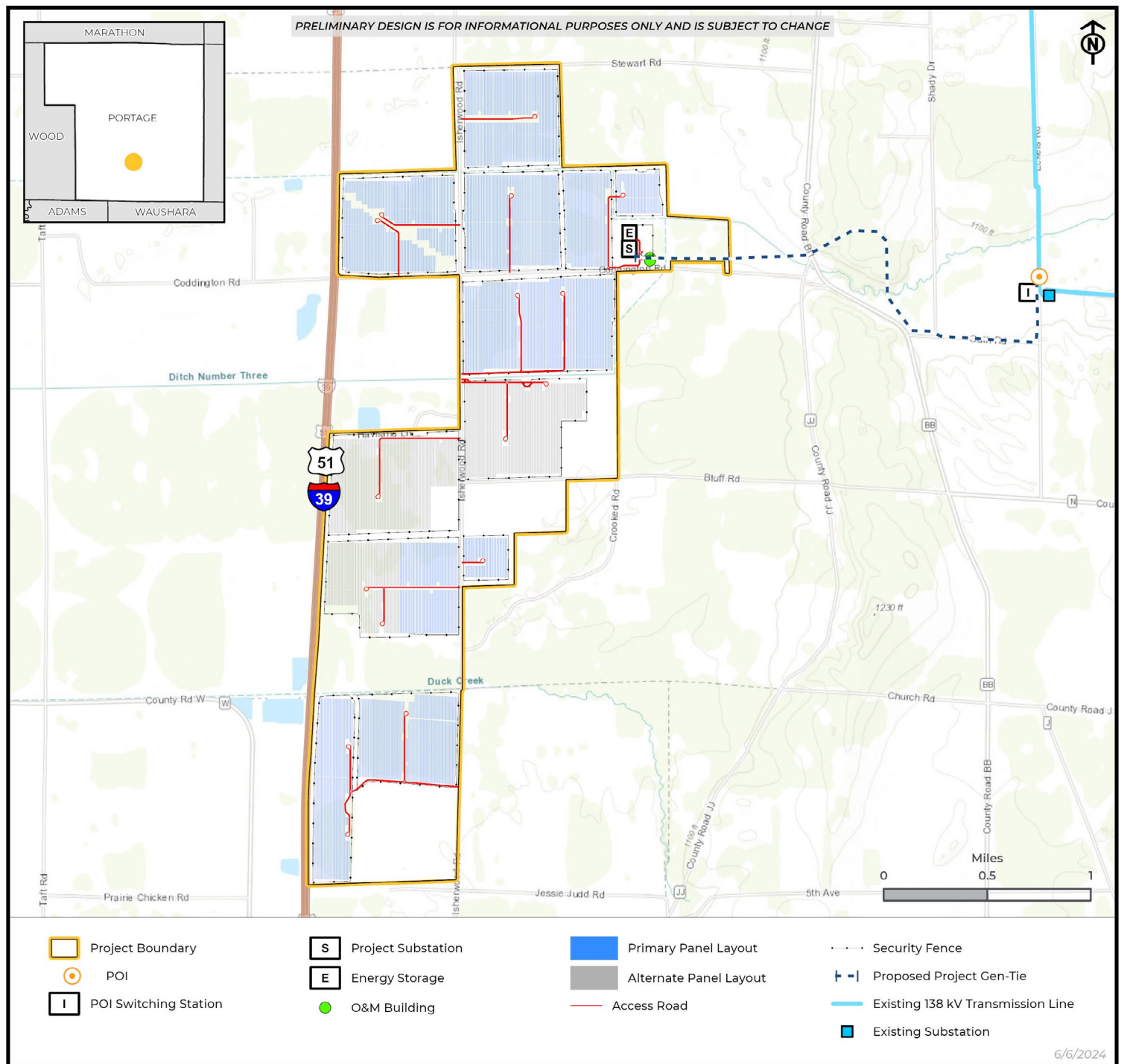
2027



Projected operation start:
early 2029

2029

PORCHLIGHT SOLAR PROJECT



PORCHLIGHT

The following companies and organizations provided data that contributed to the production of this map - CoreLogic, Inc., Environmental Systems Research Institute (ESRI), OpenStreetMap contributors, ReGrid, Loveland Technologies, U.S. Department of Agriculture (USDA), U.S. Federal Aviation Administration (FAA), U.S. Geological Survey (USGS), WhiteStar Corporation, Ventyx, Inc., An ABB Company, Imagery © 2024 Hexagon and data partners.